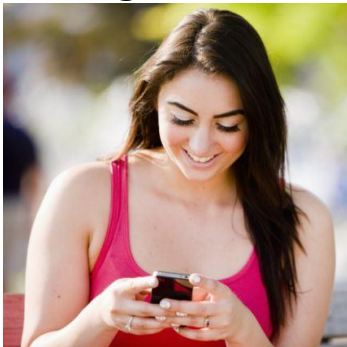




Mary Redmayne, PhD, Dept. Epidemiology & Preventive Medicine  
Level 6, 99 The Alfred Centre, South Yarra, Melbourne, VIC 3004, AUSTRALIA.  
[Mary.redmayne@monash.edu](mailto:Mary.redmayne@monash.edu) Ph. +61 3 990 30285

## Where's your mobile phone?

I am a Monash University researcher undertaking a study on how young women store, carry and use their mobile phones, as well as finding out about perception of risk.



*Would you like to take part?*

*15 minute online survey*



*Who is it for? Young women aged between 12 and 40*

*What does it involve? Doing a 15 minute online survey*

*What about privacy? It is completely anonymous.*

Chief Investigator: Dr Mary Redmayne, Dept. of Epidemiology and Preventive Medicine, Monash University. There's an explanatory statement with more information and contact details available at the PRESEE webpage (check on this board too): <http://www.med.monash.edu.au/epidemiology/clinepi/presee.html> Scroll down to "Current Research" then click "Where's Your Mobile Phone?"

**To take part, go to this web address:**

<https://www.surveymonkey.com/r/XHH8BKD#>

**Or scan this QR** (download a free QR scanning app if you don't have one installed already)



*Tell your friends*